

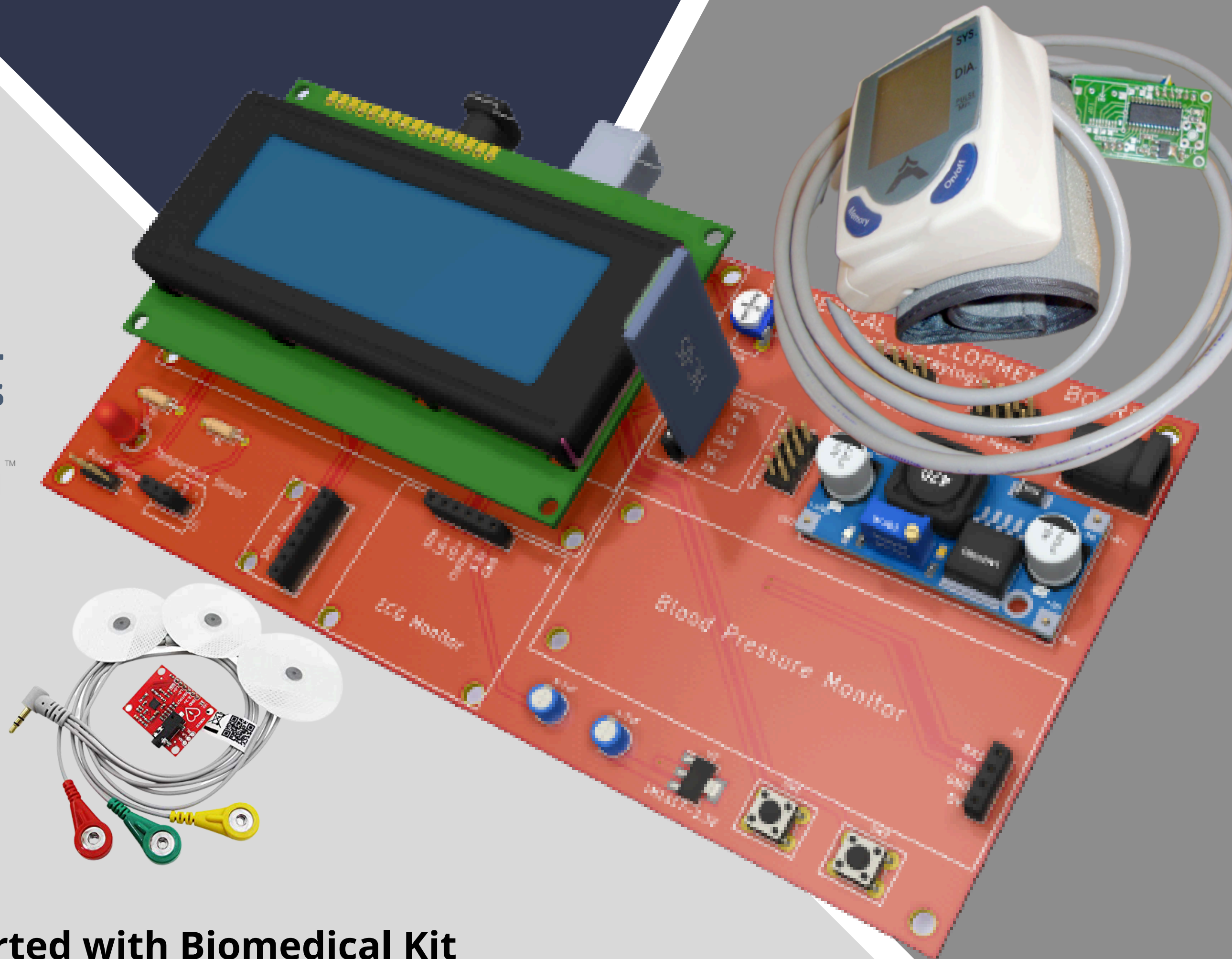
BIOMEDICAL DEVELOPMENT KIT

ARDUINO COMPATIBLE

- Easiest way to learn and develop Biomedical applications
- Save time in circuit rig-ups
- Plug & Play digital & analog sensors
- Real-time data for Machine Learning & AI applications



ROBOTICS



Getting started with Biomedical Kit

- Pulse Sensing and Monitoring
- ECG for Heart Beat Monitoring
- Oximeter for Monitoring Oxygen Levels in Blood
- Body Temperature Monitoring
- Blood Pressure Monitoring
- Wireless Data Communication using Bluetooth

TECH-GRAYLOGIX
TECHNOLOGY SIMPLIFIED

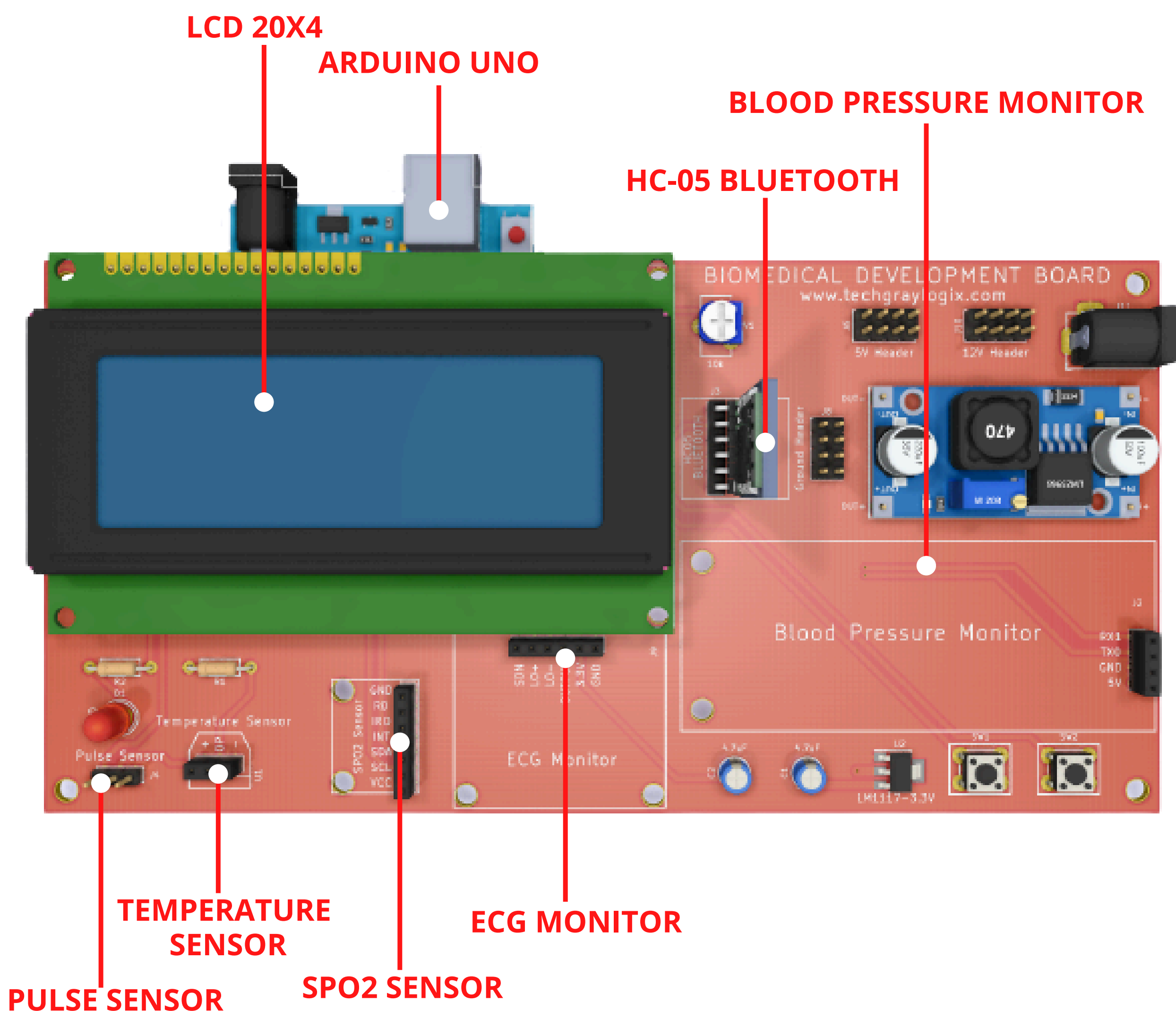
www.techgraylogix.com

The kit includes the necessary hardware, code and guide to build various Embedded applications.

KIT CONTENTS:

- Biomedical Development Board
- Arduino Uno compatible rev 3 with USB Cable
- HC - 05 Bluetooth Module
- AD8232 ECG Module
- MAX30100 Pulse-Oximeter / SPO2 Sensor
- Blood Pressure Monitor and Module
- On - Board Switch Array
- LM35 Temperature Sensor
- Pulse Sensor
- LCD 20x4
- 12V DC Adapter

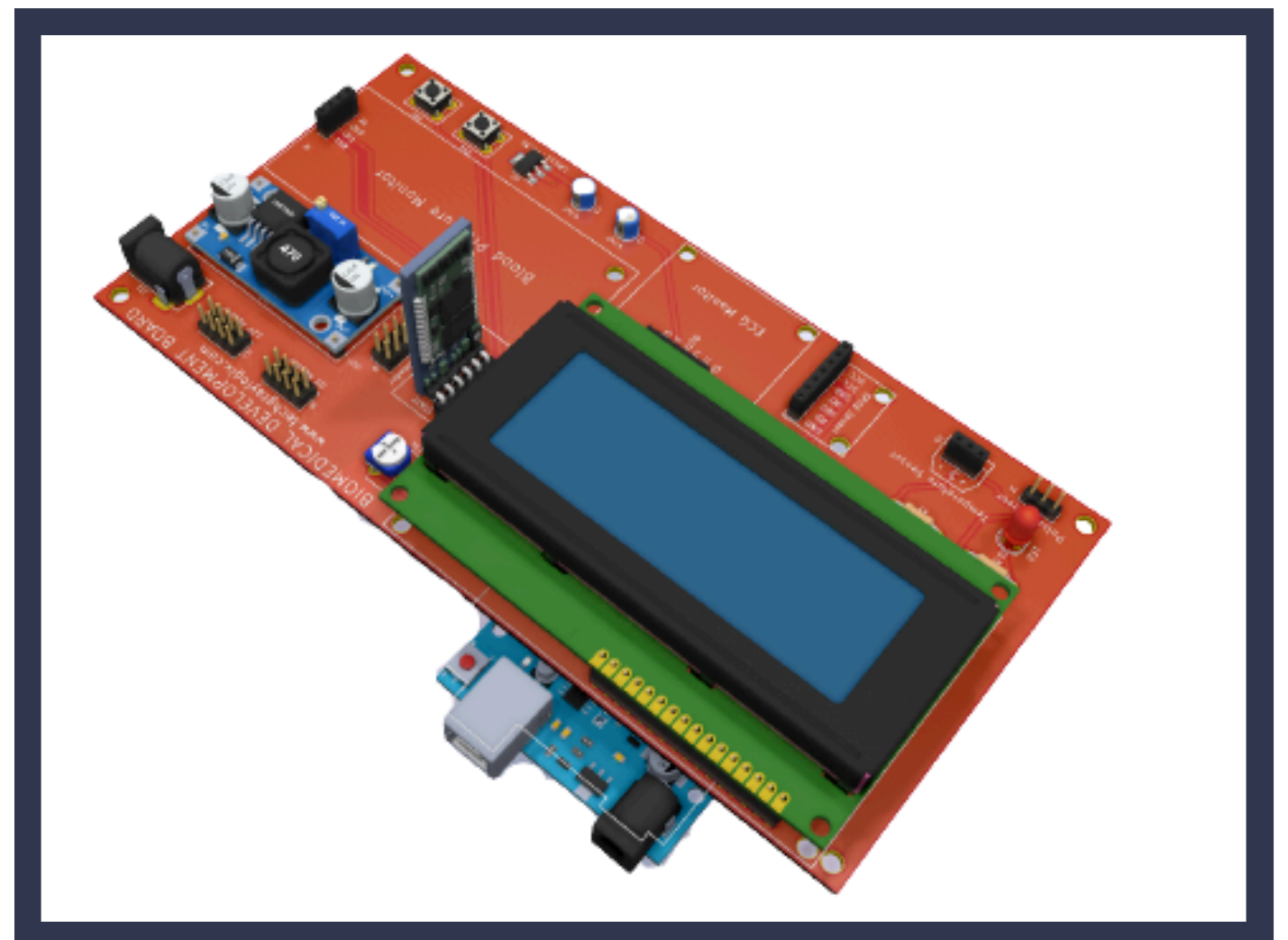
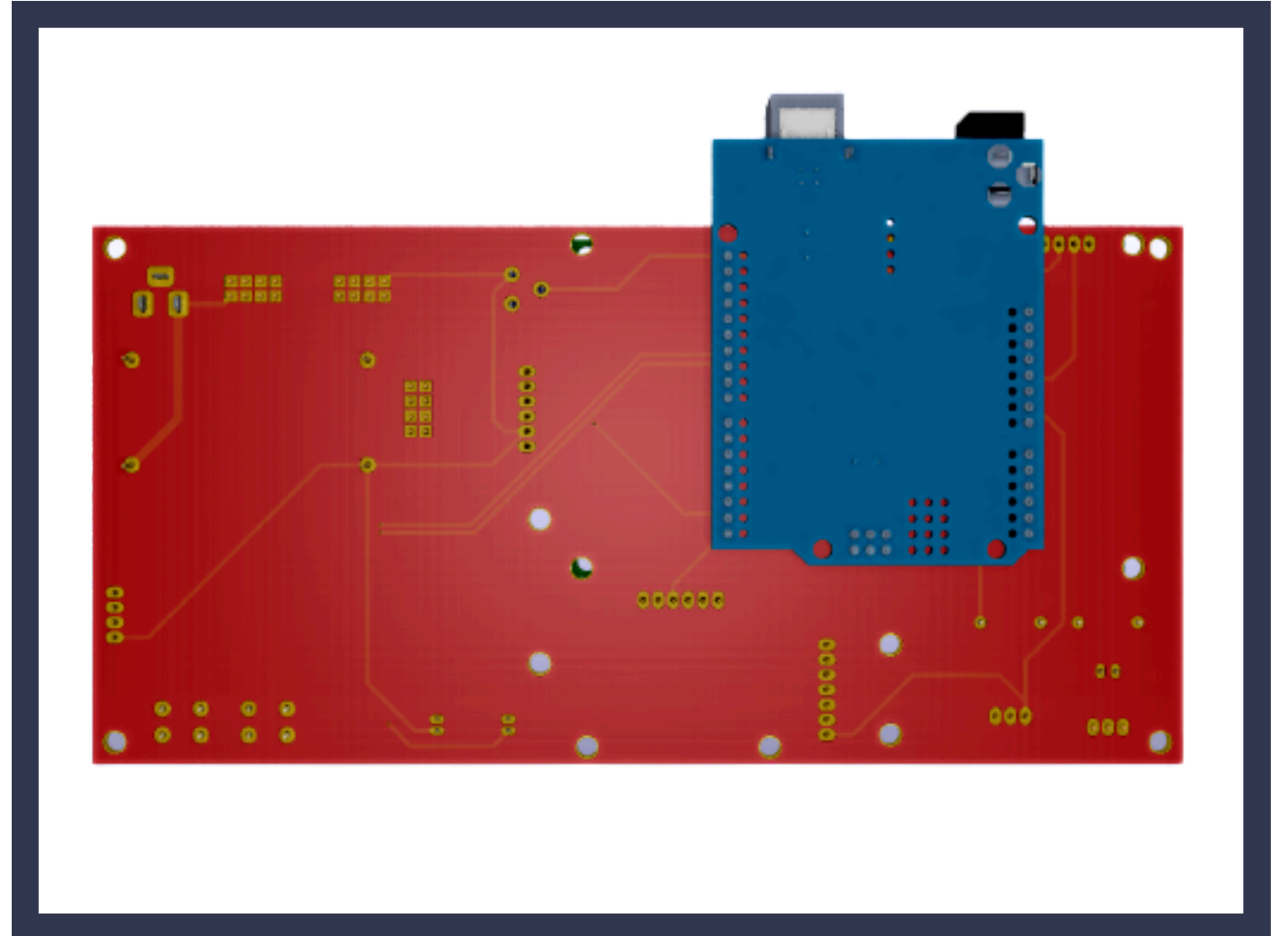
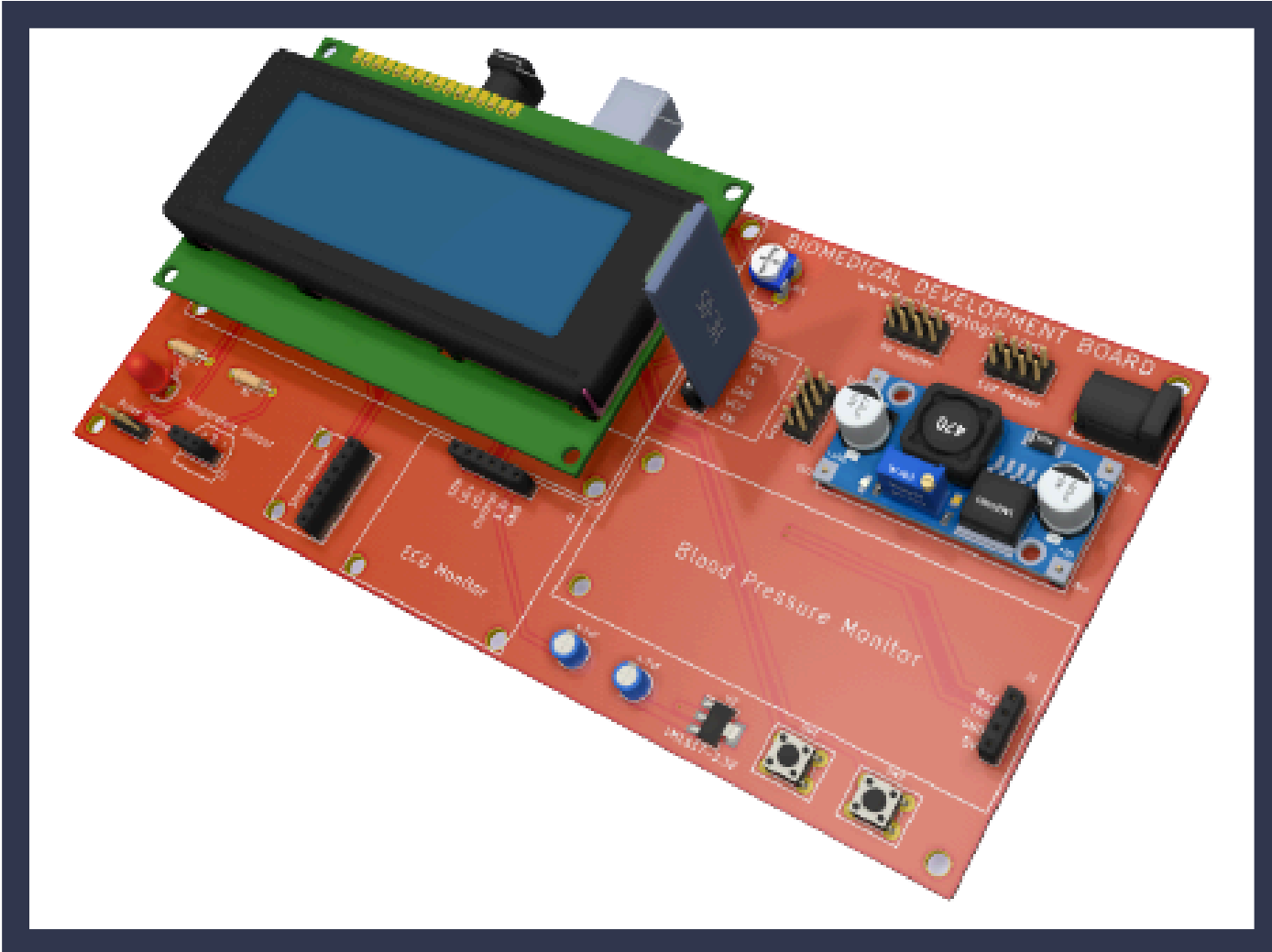
DESCRIPTION



The development board has been specifically designed to fit variety of sensors, output devices and wireless modules. The aim is to decrease the amount of time required in rigging up the circuit and to maximize learning based on plug and play method.

The kit can be programmed to readily demonstrate all the input and output devices connected to it and offers the easiest way to develop projects based on Biomedical applications.

ARDUINO-SHIELD AND COMPONENTS PLUG-IN



TECH-GRAYLOGIX

TECHNOLOGY SIMPLIFIED

www.techgraylogix.com

Tech-Graylogix, 5th floor, Oberle Towers, Balmatta, Mangalore - 575002

☎ 99868 73312 | 88671 32966

✉ info@techgraylogix.com